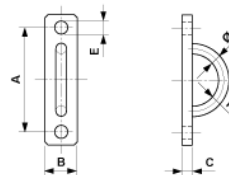


# Anchor plate horizontal with eye, Ø = 24 mm

Item number E1234-02



## Dimensions

Ø: 24 mm  
B: 50 mm  
C: 16 mm  
E: 20 mm  
A: 250 mm  
R: 75 mm

## Material and weight

Weight: 2.750 kg  
Material: STL HDG

## Comments

- To be used on fair-faced concrete fronts, concrete bearing walls, concrete pillars, etc.
- Mounting parts (to be ordered separately):
  - On Unistrut channel type 3B  
2 T-bolts M16 x 40 with hexagon nut  
part no. 352346  
2 washers 17/34 x 3, part no. 350480
  - On slush anchor M16  
2 hexagon screw M16 x 50, part no. 350360  
2 washers 17/34 x 3, part no. 350480
- Recommended load depends on the type of attachment
- Application recommendations on request